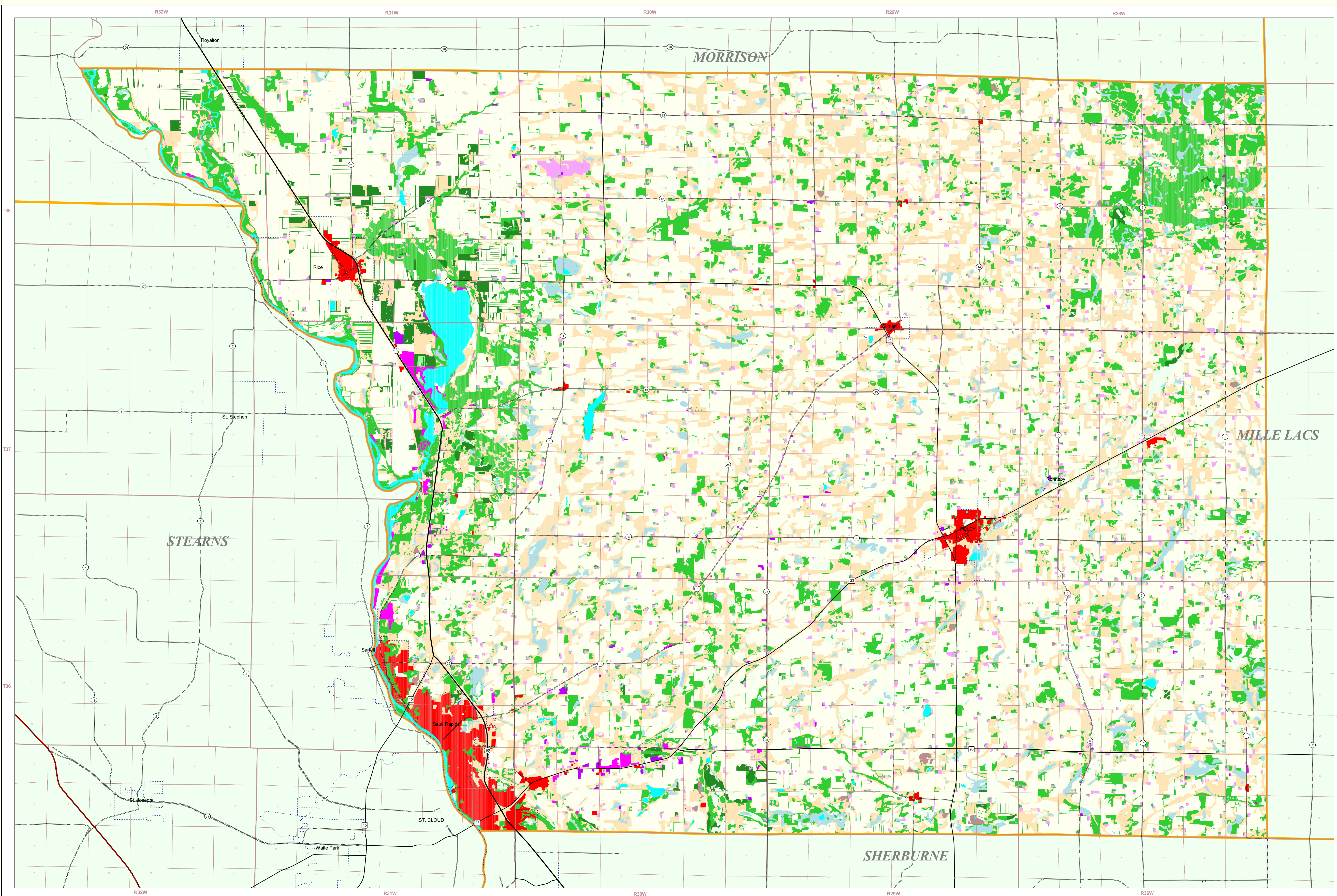


# Benton County Land Use and Cover

State of Minnesota

1988 - 1990



## MAP FEATURES

- Land Use\***
  - Urban and Industrial
  - Farmsteads and Rural Residences
  - Rural Residential Development Complexes
  - Other Rural Developments
  - Cultivated Land
  - Transitional Agricultural Land
  - Grassland
  - Grassland-Shrub-Tree Complex (Deciduous)
  - Grassland-Shrub-Tree Complex (Coniferous)
  - Deciduous Forest
  - Coniferous Forest
  - Water
  - Wetlands
  - Gravel Pits and Open Mines
  - Bare Rock
  - Exposed Soil, Sandbars, and Sand Dunes
  - Unclassified/Unlabeled/Outside State or County
- Cities\***
  - COUNTY SEAT
  - Other Cities
  - Municipal Boundary
- Highways\***
  - Interstate Highway
  - U.S. Trunk Highway
  - State Highway
  - County State-Aid Highway (CSAH)
- Public Land Survey\***
  - State Boundary
  - County Boundary
  - Township & Range Section
  - T34 Township
  - R25W Range & Direction

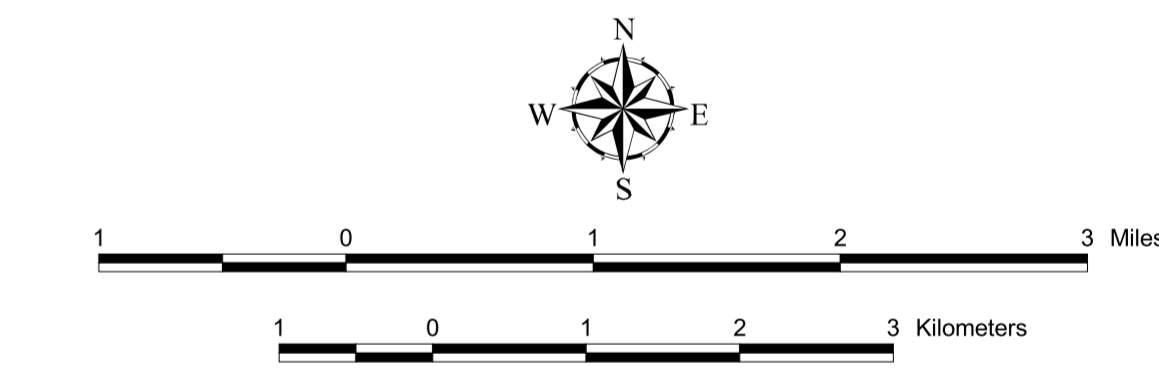
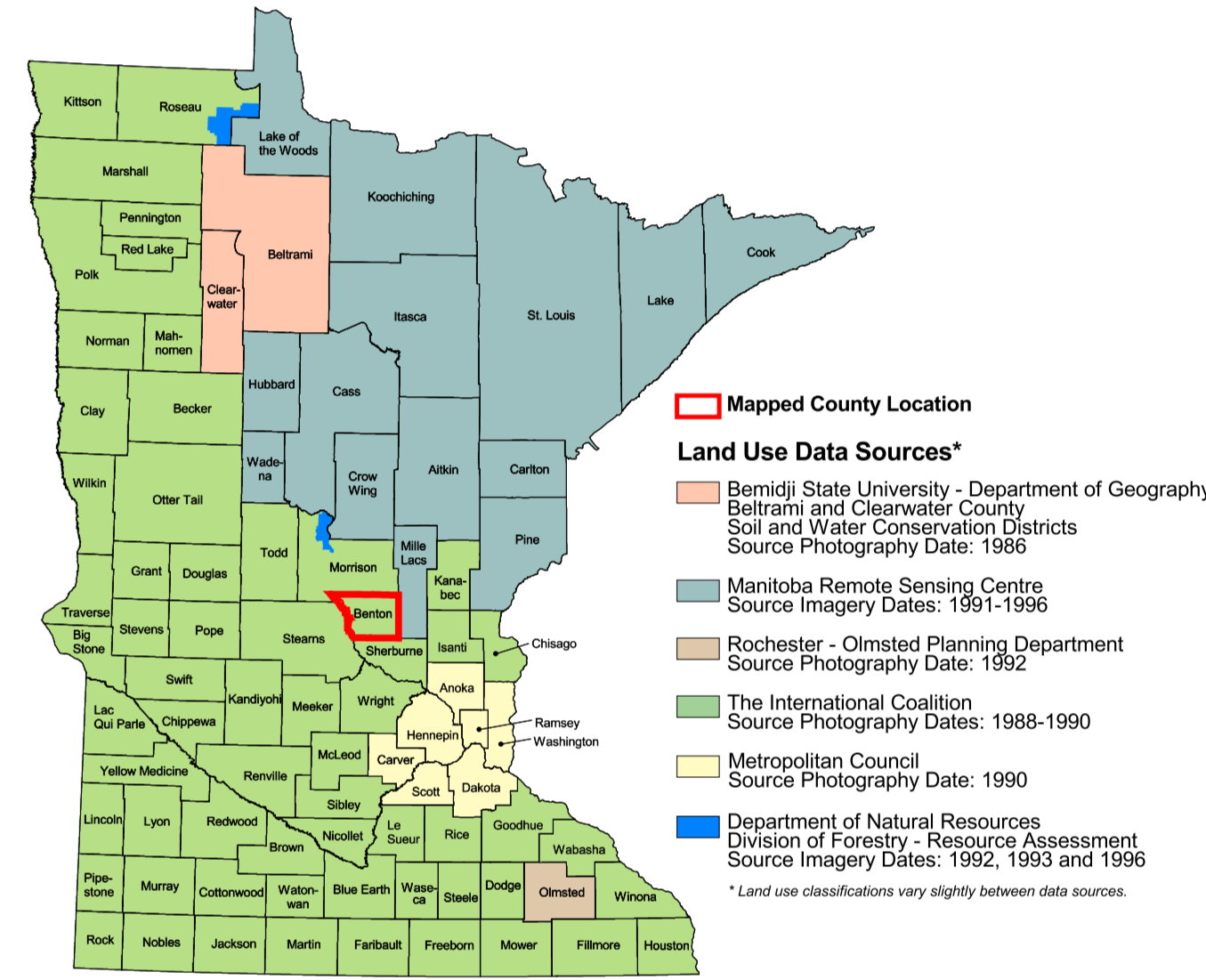
## Data Sources

1. The International Geostationary Earth Radiation Budget Experiment (IGER) Source Photography Dates: 1988-1990
2. 1:24,000-scale topographic maps, U.S. Geological Survey, 1988-1990
3. Minnesota Department of Transportation, 1992-98
4. Provided by the Minnesota Land Management Information Center from U.S. Geological Survey (USGS) 1:24,000-scale, 1988-1990 maps published between 1977 and 1986

## Benton County Land Use Statistics

Source: The Land Management Information Center (LMIC)

DESCRIPTION	ACRES	PERCENT
Urban and Industrial	2,000	0.2
Farmsteads and Rural Residences	10,000	1.0
Rural Residential Development Complexes	5,000	0.5
Other Rural Developments	15,000	1.5
Cultivated Land	100,000	10.0
Transitional Agricultural Land	50,000	5.0
Grassland	200,000	20.0
Grassland-Shrub-Tree Complex (Deciduous)	150,000	15.0
Grassland-Shrub-Tree Complex (Coniferous)	100,000	10.0
Deciduous Forest	50,000	5.0
Coniferous Forest	50,000	5.0
Water	10,000	1.0
Wetlands	10,000	1.0
Gravel Pits and Open Mines	5,000	0.5
Bare Rock	5,000	0.5
Exposed Soil, Sandbars, and Sand Dunes	5,000	0.5
Unclassified/Unlabeled/Outside State or County	5,000	0.5
<b>TOTAL</b>	<b>1,000,000</b>	<b>100.0</b>



## ABOUT THIS MAP

**Data Sources.** The land use / land cover categories displayed on this map were derived from sources that included the U. S. Department of Agriculture, Agricultural Stabilization and Conservation Service's (ASCS) low altitude, section-centered, 35mm color aerial photography taken during 1988-1990 and U.S. Fish and Wildlife Service National Wetlands Inventory (NWI) 1:24,000-scale field maps. Landsat satellite images (date unrecorded) were used to verify the classifications.

**Data Interpretation and Computerization.** The project was coordinated by The International Coalition for Land and Water Stewardship in the Red River Basin. Land use / land cover interpretation was performed by DPA International. The smallest area interpreted was approximately 2.5 acres.

Land use / land cover information was transcribed on to stable-base mylars registered to U.S. Geological Survey 1:24,000-scale topographic maps and then digitized by DPA International or Alexandria Technical College staff. Minnesota Department of Natural Resources GIS Bureau staff then joined the digitized files together to create county coverages.

**On-line documentation:** <http://lucy.lmic.state.mn.us/metadata/use93.html>

**Credits and Acknowledgements**  
Data collection and interpretation supported by the Minnesota Future Resources Fund as recommended by the Legislative Commission on Minnesota Resources (LCMR).

**The following groups also participated over an extended period:**  
Alexandria Technical College - GIS Program  
DPA International  
The International Coalition  
Minnesota Board of Water and Soil Resources  
Minnesota Department of Natural Resources  
Minnesota Land Management Information Center  
North Dakota State University - Agricultural Engineering Department  
The Red River Management Board  
University of Minnesota - Department of Forest Resources  
University of North Dakota - Geography Department  
Widseth, Smith and Notling

**Map Projection:** UTM, Extended Zone 15  
**Datum:** NAD83

**Liability Statement**  
The Land Management Information Center (LMIC) does not warrant the results you may obtain by using this map. This map is provided "as is" without express or implied warranties, including warranties of merchantability and fitness. In no event will LMIC be liable for any consequential, incidental or special damages, including any lost profits or lost savings, even if a LMIC representative has been advised of the possibility of such damages or any other claim by any third party.

**For further assistance, or to order copies of this map, contact:**  
Land Management Information Center  
655 Cedar Street  
Centennial Building, Room 330  
St. Paul, MN 55155  
Phone: (651) 296-1211  
FAX: (651) 296-1212  
email: [clearinghouse@lmic.state.mn.us](mailto:clearinghouse@lmic.state.mn.us)

**Distribution Information**  
This map was prepared in April, 1999. Both the map and the data used to create it are available from the Land Management Information Center at Minnesota Planning.  
You may also view a generalized, interactive land use map of Minnesota, along with detailed information about land use data at:  
<http://mapserver.lmic.state.mn.us/landuse>

